

RAPIDE BOOM

TECHNICAL SPECIFICATION

RAPIDE BOOM

Part No. **FB/0003 (Minicon)**
FB/0006 (Mini ASTM)

Application

Vikoma Rapide booms are specifically designed for economic response to emergency situations in sheltered waters, and are also used as deflector booms with the Vikoma Fasflo 25 System.

Operational Dimensions

Overall Height	45 cm
Freeboard	15 cm
Draft	30 cm
Boom length	6 metres
Packed weight	2kg/m

Material

Composition	High frequency welded to guarantee seam integrity from single ply nylon weave material with a polyurethane based thermoplastic coating
Colour	Orange
Fabric tensile strength	3920 N / 50 mm
Fabric tear strength	400/400N (warp/weft)
Ballast chain	10 mm diameter galvanised chain

Buoyancy

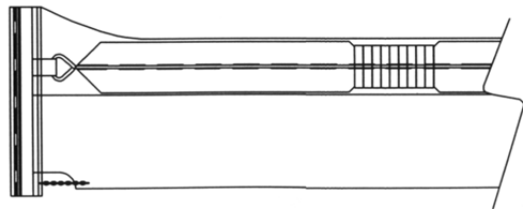
Internal ethafoam cylinders in 1m segments

Section Connectors

Minicon or Mini ASTM marine grade aluminium quick-fit connectors, secured by nylon thumb screws.

Towing / Mooring Bridles

Towing Bridles facilitate easy manoeuvring and towing of the boom and are supplied complete with appropriate connectors.



Standard Equipment

Operation & maintenance manual

Optional Accessories

Magnetic connectors (BE/4123)
Towing / Mooring Bridle Minicon (BK/0072)
Towing / Mooring Bridle ASTM (BK/0149)
Cold Glue Repair Kit (SK/1009)

oil containment booms